

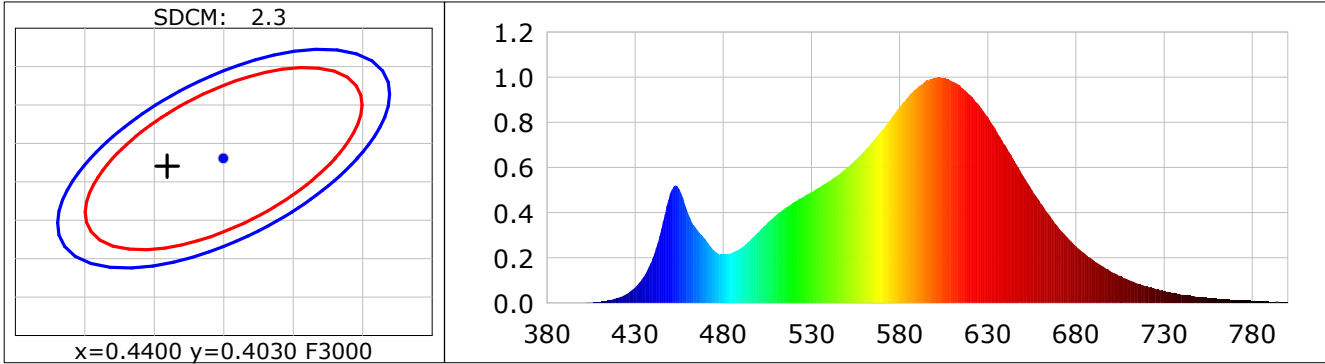
Lightsource Test Report

Product Infomation

Product Category: LED STRIP	Product Type: LED STRIP
Product Spec: BELL 3	Product Number: 393
Manufacturer: TECSOLELED S.L.	Buyer: TECSOLELED S.L.

CIE Colorimetric Parameters

Chromaticity coordinates: $x=0.4359$ $y=0.4020$ $u(u')=0.2508$ $v=0.3469$ $v'=0.5204$
 CCT: $T_c=3000K$ ($duv=-0.00069$) Color Ratio: $R=0.229$ $G=0.744$ $B=0.027$
 Peak Wavelength: 602.6nm Half Bandwidth: 123.0nm
 Dominant Wavelength: 583.1nm Color Purity: 0.515
 CRI: $R_a=82.1$, $avgR(1\sim14)=76.8$, $avgR(1\sim15)=76.6$ TM30: $R_f=84$, $R_g=95$
 GAI: $GAI_BB_8=94.0$, $GAI_BB_15=101.5$, $GAI_EES=54.0$
 R1 =81 R2 =92 R3 =95 R4 =80 R5 =81 R6 =90 R7 =81 R8 =57
 R9 =5 R10=81 R11=79 R12=73 R13=83 R14=98 R15=73
 Color Quality Scale: $Q_a=82.0$, $Q_f=83.7$, $Q_p=83.1$, $Q_g=90.7$
 Q1 =78 Q2 =95 Q3 =83 Q4 =79 Q5 =82 Q6 =83 Q7 =83 Q8 =86
 Q9 =95 Q10=90 Q11=86 Q12=83 Q13=82 Q14=71 Q15=73



Photometric Parameters

Luminous Flux: 2166.1 lm	Efficiency: 102.39 lm/W	Radiant Power: 6.537 W
Total mains efficacy: 94.81 lm/W	Energy Efficiency Class: F (EU 2019/2015)	

Electric Parameters

Voltage: 24.000V	Current: 0.8815A	Power: 21.16W
Power Factor: 1.0000	Frequency: 0.00Hz	

Test Infomation

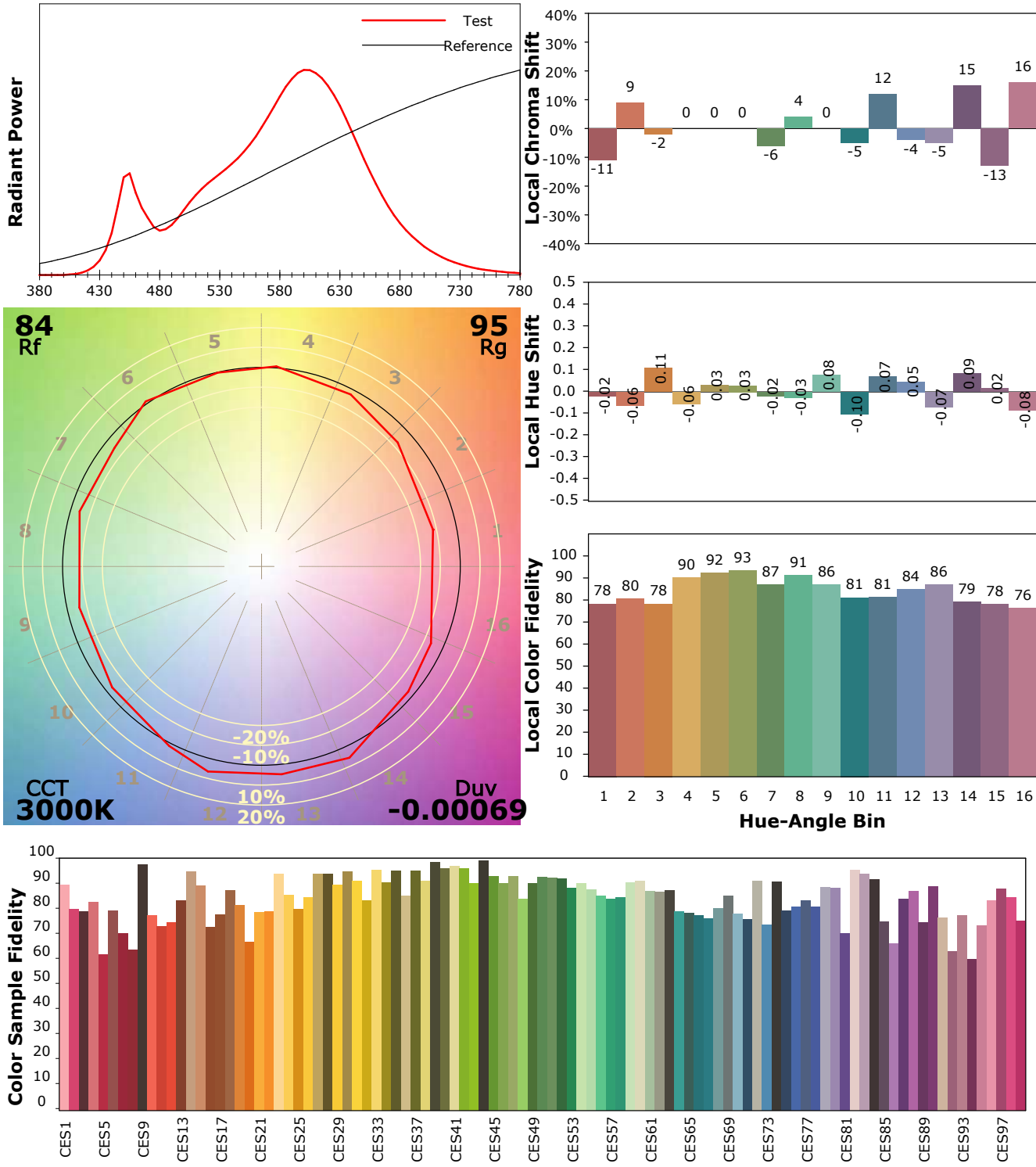
Scan Range: 380~800:1nm	Photometric Method: sphere-spectroradiometer
Stabilization Time: 0 Sec ALC.: 1.0000	Photometric Condition: Sphere diameter: 1.50m, 4PI
Max of Signal: 46732 (2026)	CCD Integration Time: 341.51 ms

IES TM-30-18 Color Rendition Report

Product Information

Product Category: LED STRIP
 Product Spec: BELL 3
 Manufacturer: TECSOLELED S.L.

Product Type: LED STRIP
 Product Number: 393
 Buyer: TECSOLELED S.L.



Condition: Tx:17.3'C, Ti:16.6'C, R.H.:60%
 Test Lab: TECSOLELED S.L.
 Operator: JORDAN GIL DIAZ

Test Device: Inventfine CMS-2S (Plus)
 Test Time: 2021-11-08 15:27:17
 Inspector: